

May 23 - May 27, 2022

Team News

Welcome to Week # 36 @ Weber Middle School.

Bell Schedule - Slide #11

GUESS WHAT?



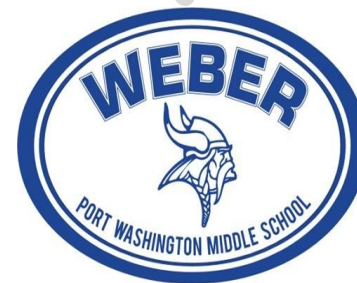
Don't forget to order your lunch!

Don't forget ID Card

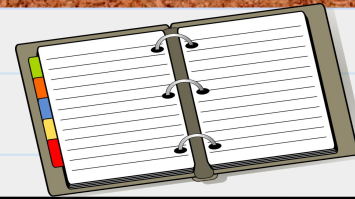


Always make sure to check the teacher Websites!

Click [HERE](#) to find your teachers on the faculty pages.



Reminders



Charge your Chromebook!

Bring your Chromebook and charger to school.

Did you order your lunch!

Did you check the calendar?

Are all your materials in your backpack/binder?



Blue Six**Week of: 5/23/2022****Weekly Calendar**

SUBJECT	MONDAY A	TUESDAY B	WEDNESDAY A	THURSDAY B	FRIDAY
English	<i>Social Issues Discussion #2</i>	<i>Persuasive Note Cards</i>	<i>Persuasive Note Cards</i>	<i>Social Issues Focus #3</i>	<i>No School</i>
Social Studies	<i>Traditions of Kung Fu and Pandas</i>	<i>Hinduism</i>	<i>Buddhism</i>	<i>Comparing Beliefs: Hinduism + Buddhism</i>	<i>No School</i>
Math	<i>Frequency Tables</i>	<i>Dot Plots</i>	<i>Histograms</i>	<i>Quiz</i>	<i>No School</i>
Science	<i>Force in Motion Phet Lab Google Slide Work</i>	<i>Force in Motion Continues Notes</i>	<i>LAB</i>	<i>Force in Motion Fur</i>	<i>No School</i>

Look Ahead

Science - Force in MOTION Fun continues - Labs & Activities with a bit of Fun! POP quiz on PE & KE sometime this week.

English - This week we will continue researching our persuasive topics.

Math - Quiz on Thursday, 5/26 (Frequency Tables/Dot Plots/Histograms)

Social Studies- No School Friday

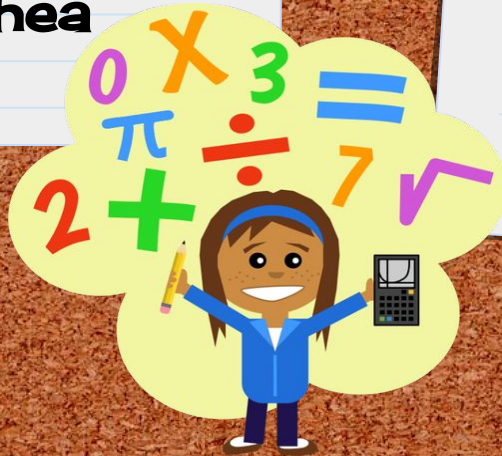
Memorial Day
Soon

Math

Ms. O'Shea

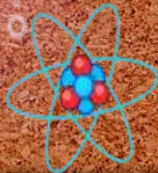
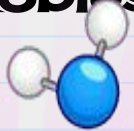
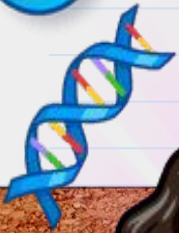
- Your daily homework assignments are listed under **Classwork** on your **Math Google Classroom**.

- The next extra help session will be **Friday 6/3/22 @ 7:30 in Room 11**.



SCIENCE!

Ms. Robles



Your daily homework assignments are listed under **Classwork** on your **Science Google Classroom**.

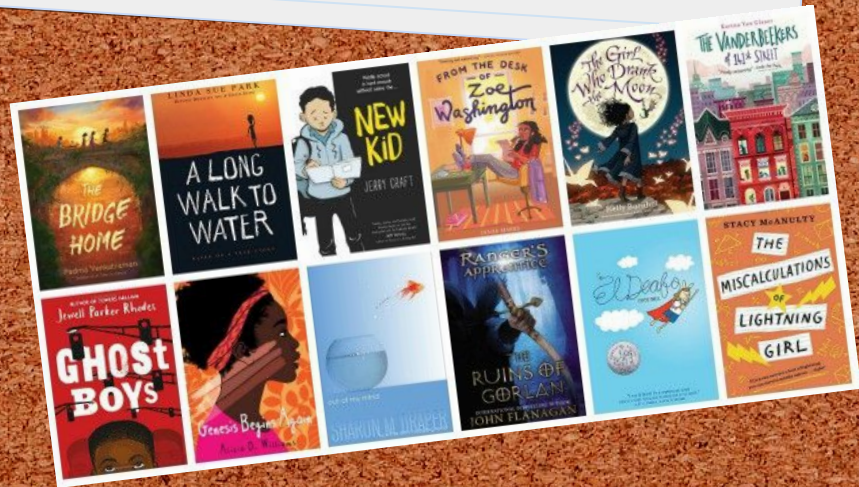
Extra help sessions on (4/07) from 7:30 to 8:00 AM and (4/26) from 3:15 PM - 3:45 PM in Room 9 .



English Language Arts

Mr. Smith

Read every day, lead
a better life!



Social Studies

Mr. Siegel

1. Your daily homework assignments are listed under **Classwork** on your **Social Studies Google Classroom**.

- 2.



Blue 6 Team

Teacher Email

joshea@portnet.org
rrobles@portnet.org
gsmith@portnet.org
zsiegel@portnet.org



Ms. O'Shea



Mr. Smith



Mr. Siegel



Ms. Robles

WEEKLY SCHEDULE

Regular Schedule

In School - ALL DAYS!

Alternating A and B Days!

~~~~~

## In-Person Schedule

| Period   | Time           | Minutes |
|----------|----------------|---------|
| Homebase | 8:07-8:14 am   | 7       |
| Period 1 | 8:17-8:58 am   | 41      |
| Period 2 | 9:02-9:43 am   | 41      |
| Period 3 | 9:47-10:28 am  | 41      |
| Period 4 | 10:32-11:17 am | 45      |
| Period 5 | 11:21 am-12:06 | 45      |
| Period 6 | 12:10-12:55 pm | 45      |
| Period 7 | 12:59-1:40 pm  | 41      |
| Period 8 | 1:44-2:25 pm   | 41      |
| Period 9 | 2:29-3:10 pm   | 41      |

*Class Times  
&  
Bell Schedule*

**BELL  
SCHEDULE**



Did You Know: each year, March and June end on the same day

# Birthdays

May

Drew - 5/5



Jacob K - 5/8

★HAPPY★  
BIRTHDAY!

Ryan - 5/13



Charlotte C - 5/27  
Hunter - 5/27

9 June Birthdays!

